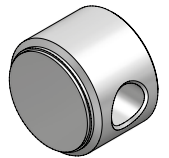
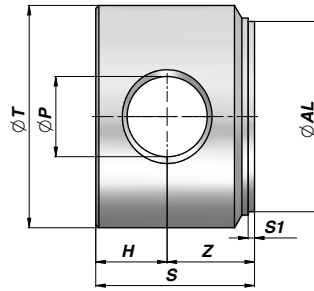


FONDELLO CON FORO  
END PLUG WITH HOLE

CFO

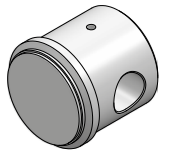
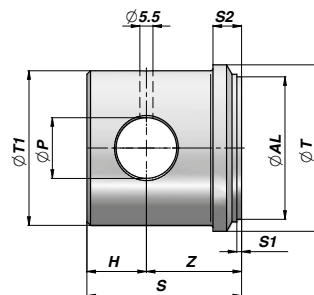


Codice Code	ØAL	ØT	ØP	Z	H	S	S1	kg	Confezione Box	Pz Pcs
CF04005016	40	50	16.20	20.0	15.0	35	2	0.42	Z50CF04005016	50
CF05006020	50	60	20.25	25.0	20.0	45	2	0.80	Z20CF05006020	20
CF06007025	60	70	25.25	27.5	22.5	50	2	1.20	Z20CF06007025	20
CF07008025	70	80	25.25	27.5	22.5	50	2	1.60	Z10CF07008025	10
CF08009530	80	95	30.25	35.0	25.0	60	2	2.70	Z05CF08009530	5
CF10011535	100	115	35.25	40.0	30.0	70	2	4.70	Z05CF10011535	5

MATERIALE : ACCIAIO S355JO ( Fe510C ) - S355JR ( A105 )  
MATERIAL : STEEL S355JO ( Fe510C ) - S355JR ( A105 )

FONDELLO CON FORO  
END PLUG WITH HOLE

CFHRT



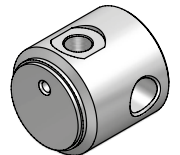
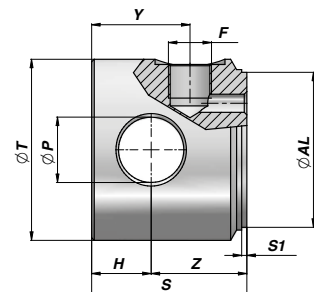
Codice Code	ØAL	ØT	ØP	Z	H	S	S1	Ø1	S2	kg	Confezione Box	Pz Pcs
CFHRT07060	60	70	25.50	40	25	65	2	65	12	1.48	Z12CFHRT07060	12
CFHRT08070 <b>NEW!</b>	70	80	25.25	35	25	60	2	75	10	1.79	Z10CFHRT08070	10
CFHRT09080 <b>NEW!</b>	80	90	30.25	40	30	70	2	85	10	2.64	Z05CFHRT09080	5

MATERIALE : ACCIAIO S355JO ( Fe510C ) - S355JR ( A105 )  
MATERIAL : STEEL S355JO ( Fe510C ) - S355JR ( A105 )

A RICHIESTA : INGRASSATORE VEDI PAGINA 103  
ON REQUEST : GREASE NIPPLE SEE PAGE 103

FONDELLO CON FORO ED ENTRATA OLIO  
END PLUG WITH CROSS HOLE AND INLET PORT

CFE



Codice Code	ØAL	ØT	ØP	Z	H	F BSP	Y	S	S1	kg	Confezione Box	Pz Pcs
CFE0400504	40	50	16.20	35	15	1/4"	30	50	2	0.60	Z25CFE0400504	25
CFE0500606	50	60	20.25	40	20	3/8"	38	60	2	1.10	Z10CFE0500606	10
CFE0600706	60	70	25.25	37	23	3/8"	38	60	2	1.40	Z10CFE0600706	10
CFE0700806	70	80	25.25	37	23	3/8"	38	60	2	1.95	Z10CFE0700806	10
CFE0800958	80	95	30.25	50	25	1/2"	47	75	2	2.50	Z05CFE0800958	5
CFE1001158	100	115	35.25	45	30	1/2"	47	75	2	4.50	Z05CFE1001158	5

MATERIALE : ACCIAIO S355JO ( Fe510C ) - S355JR ( A105 )  
MATERIAL : STEEL S355JO ( Fe510C ) - S355JR ( A105 )